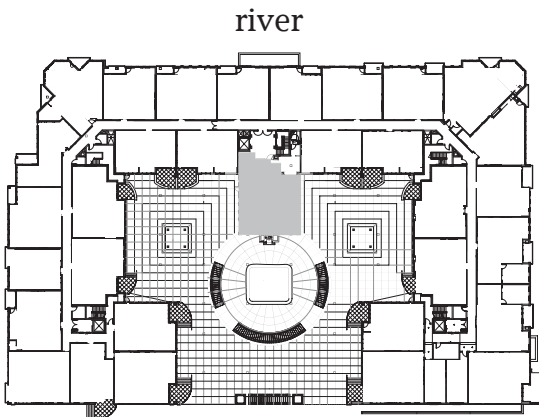
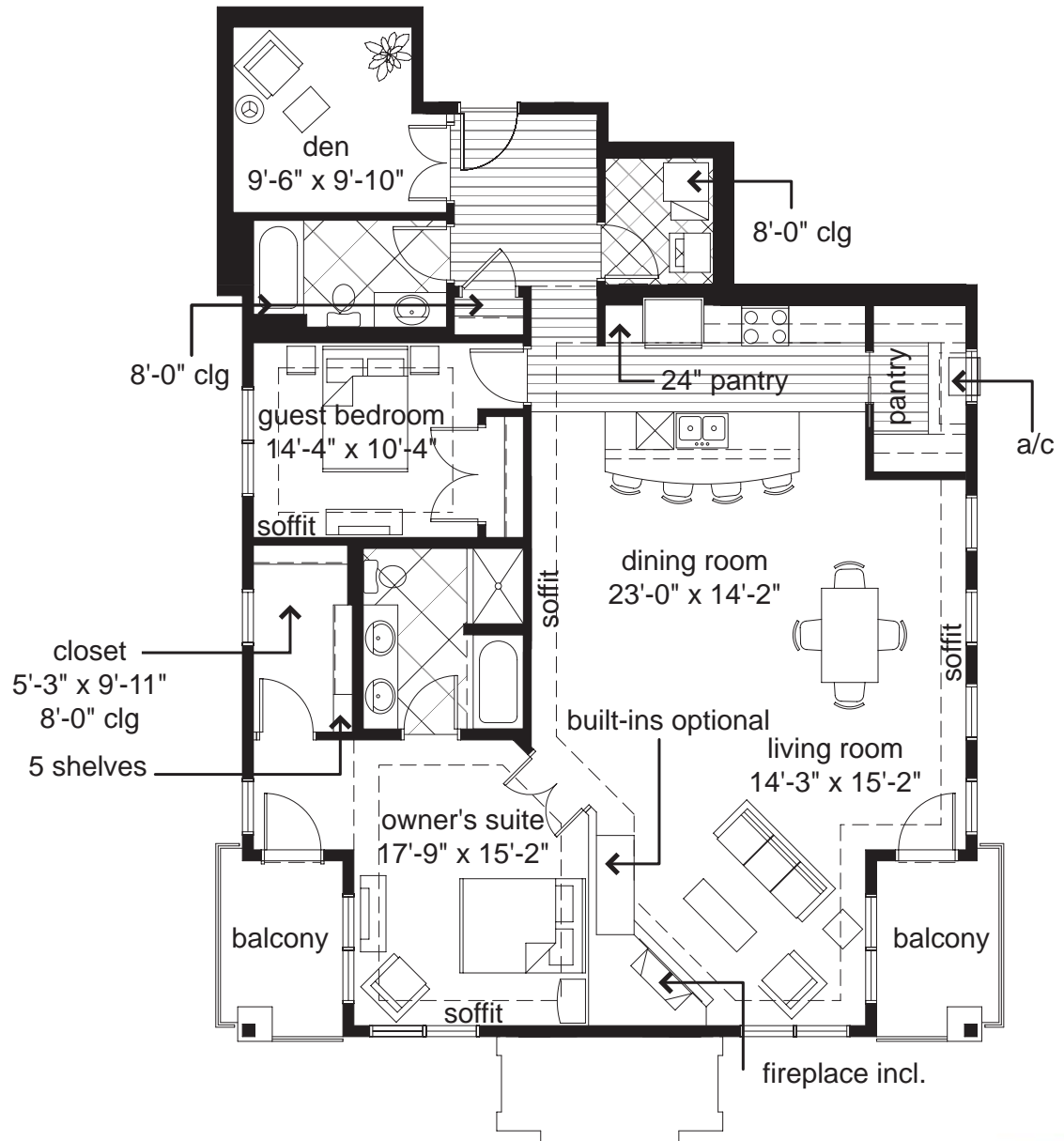


Aspen

#333 :: 1,820

#433 :: 1,746

2BR + den/2BA



* The developer's policy of continual improvement in design and construction requires that specifications, equipment, dimensions and prices are subject to change without notice. All furnace, washer, and dryer locations are subject to change.

:: 350 Main Street :: Stillwater, MN :: StillwaterMills.com :: 651.439.4444 ::

